



Lordship Lane, SE22 | £475,000

02087028222

eastdulwich@pedderproperty.com

pedder
We live local



In General

- Two bedrooms
- Top floor
- Purpose-built apartment
- 850 Sq Ft of internal space
- Good condition throughout
- Access to unallocated off-street parking
- CHAIN FREE

In Detail

CHAIN FREE - Spacious, modern and beautifully bright two bedroom purpose-built apartment with a communal terrace ideally located in the heart of Lordship Lane, East Dulwich.

Boasting 850 Sq Ft of internal space, the top-floor apartment has been recently modernised and decorated by the current owner - and is an ideal first-time purchase. There is a massive 24x17 ft reception room flooding with natural light with windows at both ends with an adjacent separate modern kitchen. There are two comfortable bedrooms including the 17-ft principal bedroom along with a family bathroom and wide hallway.

Shawbury Court, Lordship Lane is enviably located for the independent shops, bars, restaurants and coffee shops of Lordship Lane and North Cross Road as well as the excellent local parks and green spaces. There are strong transport links into The City and West End from East Dulwich station (0.5 miles) and Peckham Rye station (1.1 miles) with bus/cycle routes through the neighbouring Dulwich Village, Herne Hill and Denmark Hill.

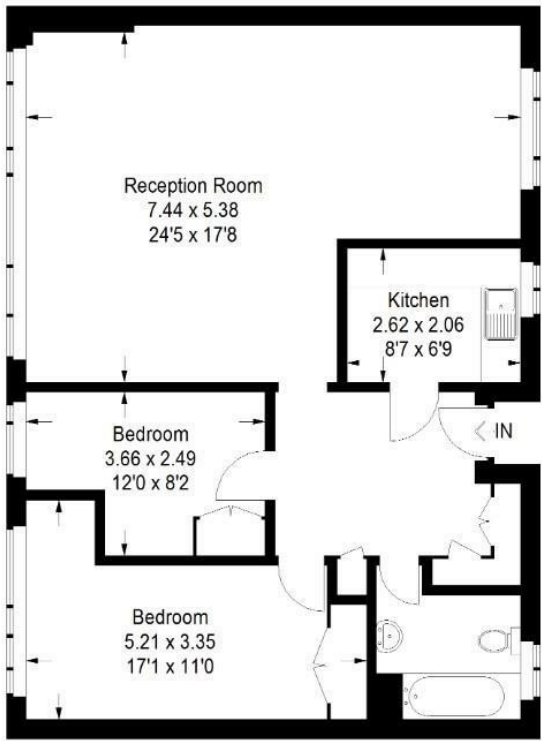
EPC: D | Council Tax Band: B | Lease: 167 years remaining | SC: £2,897 pa | GR: £0 | BI: TBC



Floorplan

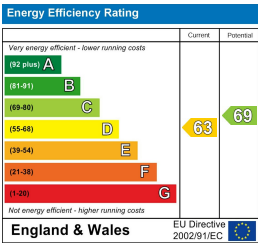
Shawbury Court, SE22

Approximate Gross Internal Area
79.0 sq m / 850 sq ft



Second Floor

Copyright www.pedderproperty.com © 2025
These plans are for representation purposes only as defined by RICS - Code of Measuring Practice. Not drawn to Scale. Windows and door openings are approximate. Please check all dimensions, shapes and compass bearings before making any decisions reliant upon them.



Pedder Property Ltd trading as Pedder for themselves and for the vendor/landlord of this property whose agents they are, give notice that (1) these particulars do not constitute any part of an offer or contract, (2) all statements contained within these particulars are made without responsibility on the part of Pedder or the vendor/landlord, (3) whilst made in good faith, none of the statements contained within these particulars are to be relied upon as a statement of representation or fact, (4) any intending purchaser/tenant must satisfy him/herself by inspection or otherwise as to the correctness of each of the statements contained within these particulars, (5) the vendor/landlord does not make or give either Pedder or any person in their employment any authority to make or give representation or warranty whatsoever in relation to this property.